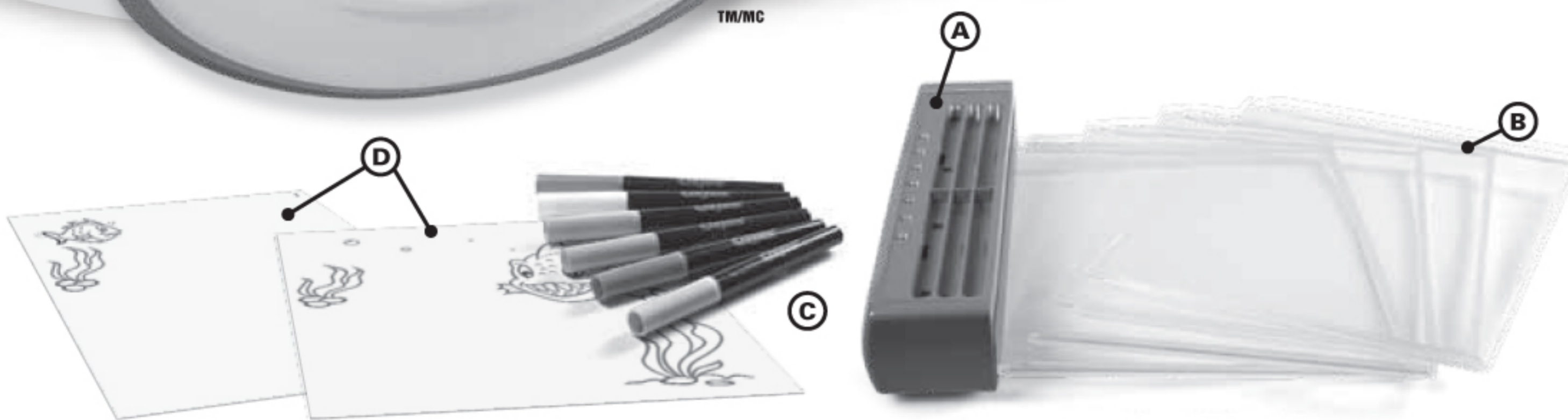


Crayola

## GLOW BOOK



## Contents

- A.** Glow Book Base    **C.** 6 Glow Markers  
**B.** 4 Clear Panels    **D.** 2 Dual-Sided Design Sheets

**For Best Results:** Work surface and hands should be clean and dry.

## Installing and Changing Batteries

**⚠ CAUTION: BATTERIES MUST BE INSTALLED BY AN ADULT ONLY. REQUIREMENTS: 3 AA Alkaline Batteries (not included), Phillips Screwdriver (not included).**

1. Use Phillips screwdriver to loosen the two (2) screws from the battery cover on side of base.
2. Remove the battery cover. If replacing batteries, remove used batteries and dispose of properly.
3. Insert three (3) fresh AA alkaline batteries and match direction to diagram inside battery case.
4. Replace battery cover and re-tighten screws.

## Getting Started

1. Remove 4 clear panels from base.
2. Center one of the panels on top of design sheet #1.
3. Trace design onto panel using Glow Markers. (Tip: Write the sheet number in upper right corner of clear panel to keep them in order).
4. Repeat with sides 2, 3 & 4 of design sheets on the other clear panels.
5. Insert clear panels back into Glow Book base. Make sure they are in order, with panel 1 in top slot & panel 4 in the bottom slot.
6. Slide On/Off switch to On position on side of base.

## Start Your Light Show

## Manual On-Off:

1. Press button #1, 2, 3 or 4 once to light up the corresponding panel. Press button again to manually turn light off.
2. Press button #5 to activate 4-way flash. Panels will flash on & off in order: #1, #2, #3, #4. Press button #5 again to manually turn feature off.

## Program Your Own 20-Way Flash Sequence:

1. Press button #6 & hold it down while tapping button #1, #2, #3 or #4 in any order you want—up to a total of 20 times.
2. Press button #6 again to activate the sequence. Panels will flash in the order that the buttons were pressed.
3. Press button #6 again to stop the sequence manually. Otherwise the flashing will continue for 60 minutes, until the Glow Book goes “to sleep.”
4. Your sequence stays in memory as long as the Glow Book is turned on. Press button #6 to re-start the last sequence programmed. If you turn the Glow Book off, the sequence will be lost.

## Sleep Mode/Auto On-Off:

Glow Book goes “to sleep” after 60 minutes. Panel lights, 4-way flash & 20-way flash will continue for 60 minutes unless manually shut off.

## Cleanup

**Note:** Keep base away from water to avoid damage to electronic components.

1. After each use or if you wish to change artwork, remove panels for cleaning. Use a soft, damp cloth or paper towel to remove marker. Dry thoroughly before placing back in the base.
2. If artwork is left on panels for a long period of time, it may be necessary to use mild detergent and water to clean. Do not use cleaners containing alcohol, ammonia or abrasives on plastic surface.
3. Use a soft, dry cloth to remove any remaining white fogging on panels.

## WASHING &amp; CARE INFORMATION

**STAIN ADVISEMENT:** Crayola Glow Markers contain colorants that may stain.

## NO BATTERIES INCLUDED



The Wheelie Bin symbol indicates that the product and the batteries must not be disposed of with other household waste as they may contain elements which can have a harmful effect on the environment and human health. Please use designated collection points or recycling facilities when disposing of the item and the batteries. To help locate your nearest facility see: [www.recyclenow.com](http://www.recyclenow.com)

## BATTERY SPECIFICATION &amp; CAUTIONS

**⚠ CAUTION: BATTERIES MUST BE INSTALLED BY AN ADULT ONLY.**

Requires 3 AA batteries 4.5 V (DC) • Do not use rechargeable batteries. • Non-rechargeable batteries are not to be recharged. • Different types of batteries or new and old batteries are not to be mixed. • Batteries must be inserted using correct polarity. • Remove and discard exhausted batteries properly as soon as possible. • Remove all batteries from compartment if toy will not be used for a long period (several months). • The supply terminals are not to be short-circuited.

**CAUTION:** changes or modifications not expressly approved by the party responsible for compliance could void the user's authority to operate the equipment. **NOTE:** This equipment has been tested and found to comply with the limits for a Class B digital device, pursuant to Part 15 of the FCC Rules. These limits are designed to provide reasonable protection against harmful interference in a residential installation. This equipment generates, uses and can radiate radio frequency energy and, if not installed and used in accordance with the instructions, may cause harmful interference to radio communications. However, there is no guarantee that interference will not occur in a particular installation. If this equipment does cause harmful interference to radio or television reception, which can be determined by turning the equipment off and on, the user is encouraged to try to correct the interference by one or more of the following measures:

- Reorient or relocate the receiving antenna.
- Increase the separation between the equipment and receiver.
- Connect the equipment into an outlet on a circuit different from that to which the receiver is connected.
- Consult the dealer or experienced radio/TV technician for help.

Contents and colors may vary. Keep instructions for future reference.



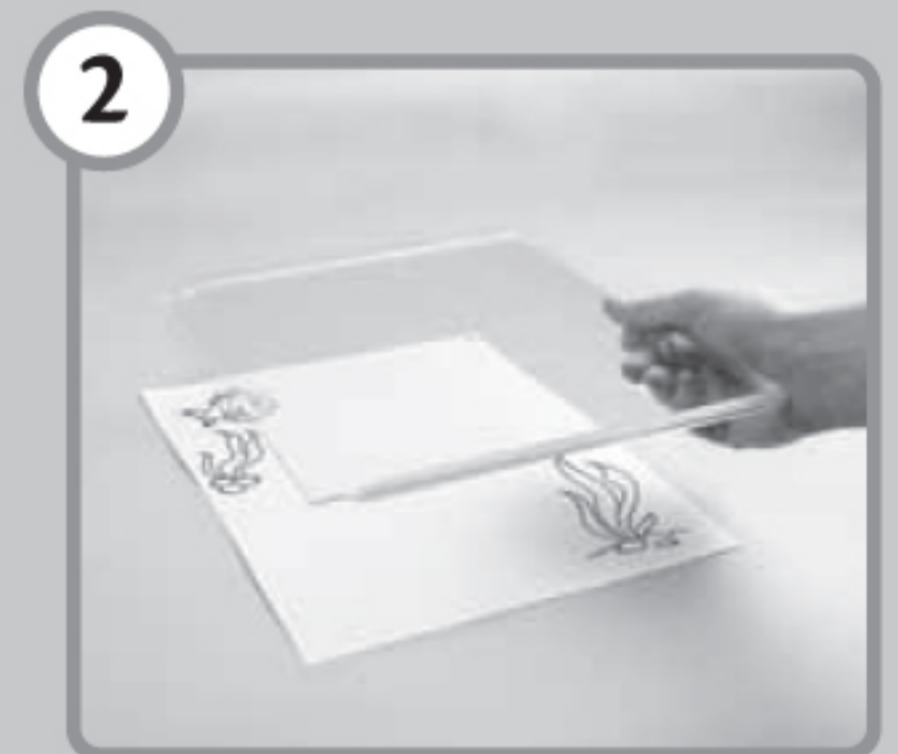
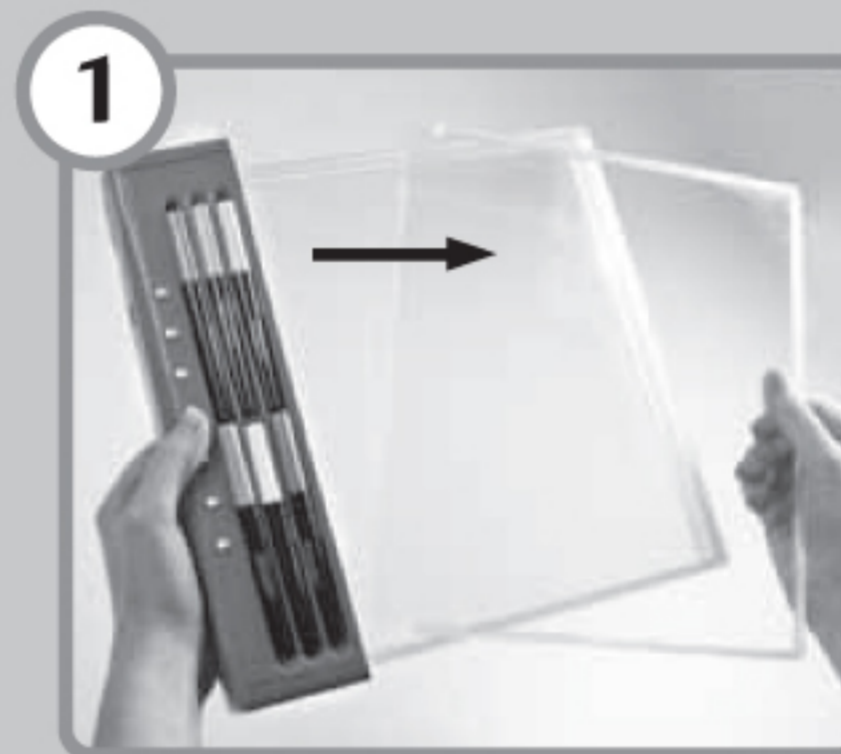
A Hallmark Company

©2011 Crayola, Easton, PA 18044-0431. Distributed in Australia by Crayola (Australia) Pty. Ltd. Imported by Binney & Smith (Europe) Ltd., Bedford Heights, Manton Lane, Bedford, Beds, MK41 7PH, England.

## SAFETY INFORMATION



Conforms to ASTM D 4236. ALL CRAYOLA ART MATERIALS ARE NONTOXIC. GLOW MARKERS ARE CERTIFIED AP. **WARNING!** Not suitable for children under 36 months due to small parts which may cause a choking hazard if swallowed.



Code#: 74-7031-0-100  
[crayola.com](http://crayola.com)

**3X AA**  
**Batteries Required NOT INCLUDED**

## QUALITY GUARANTEE

We guarantee the quality of all Crayola products. If this product does not perform properly, please contact us.

In the U.S.A. and Canada, call **1-800-CRAYOLA (800-272-9652)**, weekdays 9 AM-4 PM ET.

In Europe, call **+33 (0) 1 41 06 54 54**, weekdays 9 AM-5 PM local time.

In the UK, call **01702 208170**, weekdays 9 AM-5 PM local time.

In Mexico, call **01800 71 78 222**, weekdays 9 AM-5 PM local time.

In Australia, call Crayola AU at **1-800-657-353**, weekdays 9 AM-4 PM AEST.

